

A large tugboat is shown from a low angle, pulling a massive, thick rope that stretches across the foreground. The boat is white with a blue stripe and has various antennas and equipment on its upper decks. The sun is low in the sky, creating a bright glow and lens flare behind the boat. The water is dark and choppy, and the background shows a distant shoreline with hills and a lighthouse.

# GRS.GROUP

EXPLORE OUR WORLD OF CONCEPTS AND SOLUTIONS  
FOR THE MARITIME INDUSTRY.

## 23 EMPLOYEES

Each project stage, market segment, chartering and sale+purchase is covered by a specialized GRS team member.



## 8 OFFICES

Germany (Headquarter), France, Great Britain, Taiwan, South Korea, Japan, Australia, USA



## 100.000+ VESSELS IN DATABASE

Each offshore vessel, ferry, cruise ship or equipment type is covered by specialized GRS brokers.



## 10+ YEARS OF EXPERIENCE

With more than one decade of experience, GRS is a strong partner to all clients.







**GRS.OFFSHORE RENEWABLES** is the worldwide leading consultancy and shipbroking business in offshore renewable energy. As an independent advisor, GRS supports the negotiation of all contracts across all value creation stages of the entire project development. At the subsequent installation and operation stage, GRS as an internationally operating and independent specialist shipbroker takes on the chartering and sale and purchase of all vessels and equipment required as well as the contracting of all further offshore service providers.



**GRS.FERRY+CRUISE** as an internationally operating and independent shipbroker, GRS takes on the chartering and sale and purchase of ferries and cruise vessels. Additionally, GRS offers industry-related services and gives access to a wide selection of professional service providers.



## INNOVATIVE. EFFICIENT. INTEGRATIVE.

### A VISIONARY LEADER

To be the leading global provider of offshore renewable advisory services and provide our clients with unrivaled expertise and innovation.

---

### WE CREATE SOLUTIONS

From concept to contract to completion – the optimal solution for each client – every time.

---

### OUR KEY TO SUCCESS

Innovation – The only constant in life is change. We believe that to stay relevant, we must continually move with the changing needs of our customers.

Efficiency – we ensure sustainable efficiency through a culture of continual improvements and cost awareness.

Integrity – we treat our clients and employees with respect and value decency and fairness

---

### WE DELIBATE AND TAKE ACTION

We act independently and diligently in the best interest of all parties to provide win-win solutions.

We deliver powerful, tailor-made solutions to maximize value for our clients while minimizing the costs and risks of their offshore renewable projects.

We act with integrity. The positive working environment of our versatile and highly specialized business units enables our team to provide efficient and expert support to our clients.

## VISIONARY LEADERS

### Introducing the two Managing Partners

#### MATTHIAS MROSS

- ▶ Academic career:
  - Graduated shipbuilding engineer from Technical University Hamburg-Harburg, Germany.
  - Diploma in ship management from Lloyd's Maritime Academy, London.
- ▶ Professional career:
  - Gained technical, operational as well as commercial in-depth knowledge on all aspects of vessels through various roles, nationally as well as internationally.
  - Through extensive experience has close contacts with numerous involved parties throughout the industry.



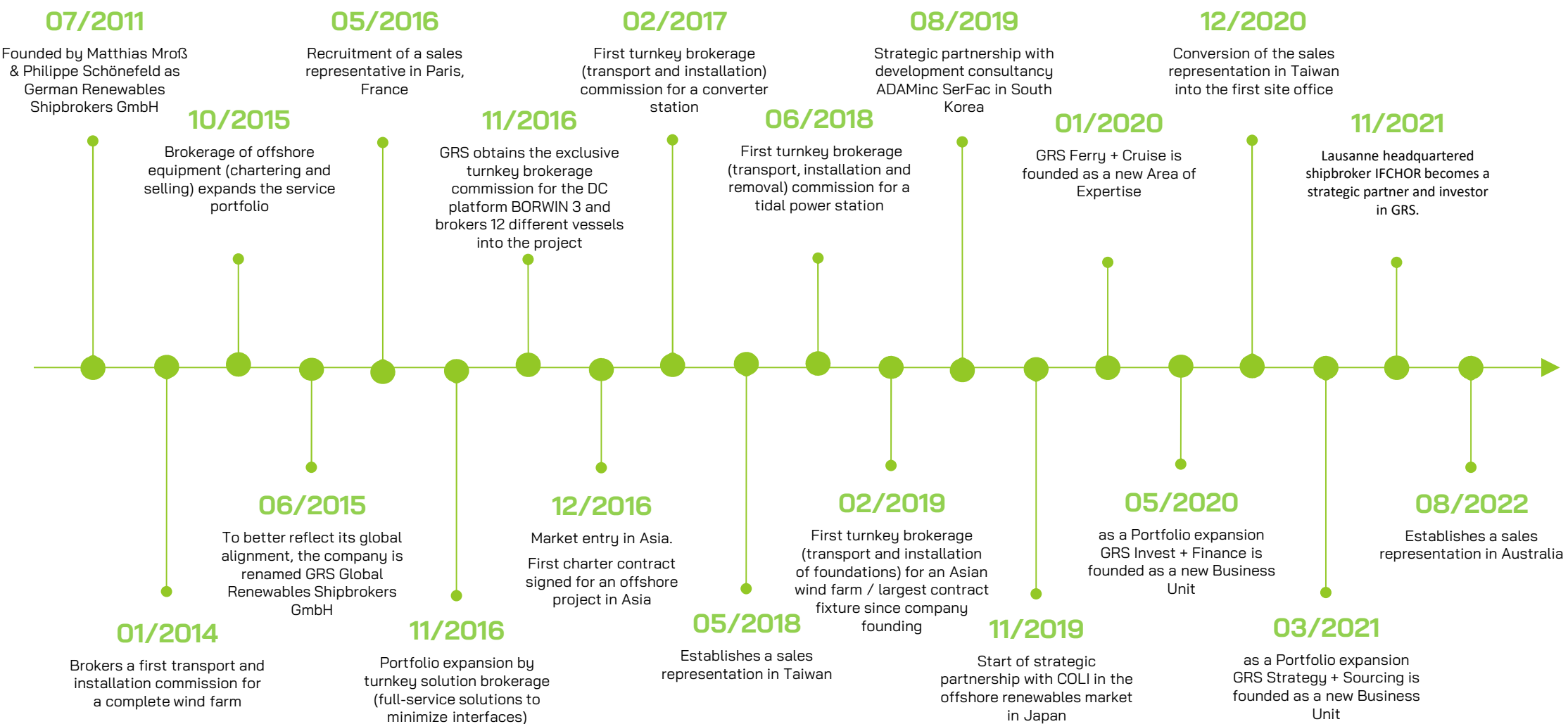
#### PHILIPPE SCHÖNEFELD

- ▶ Academic career:
  - Graduated industrial engineer and a graduate (UAS) in the field of International Transport Management.
  - Graduated in Business Management with a focus on the marine industry at the Universities of Applied Sciences in Elsfleth, Germany and Vlissingen, Netherlands.
- ▶ Professional career:
  - Gained extensive experience in business development and ship brokerage activities related to offshore wind projects.
  - Within the offshore industry possesses numerous contacts to utilities, wind turbine manufacturers, projects developers as well as offshore-related service providers.



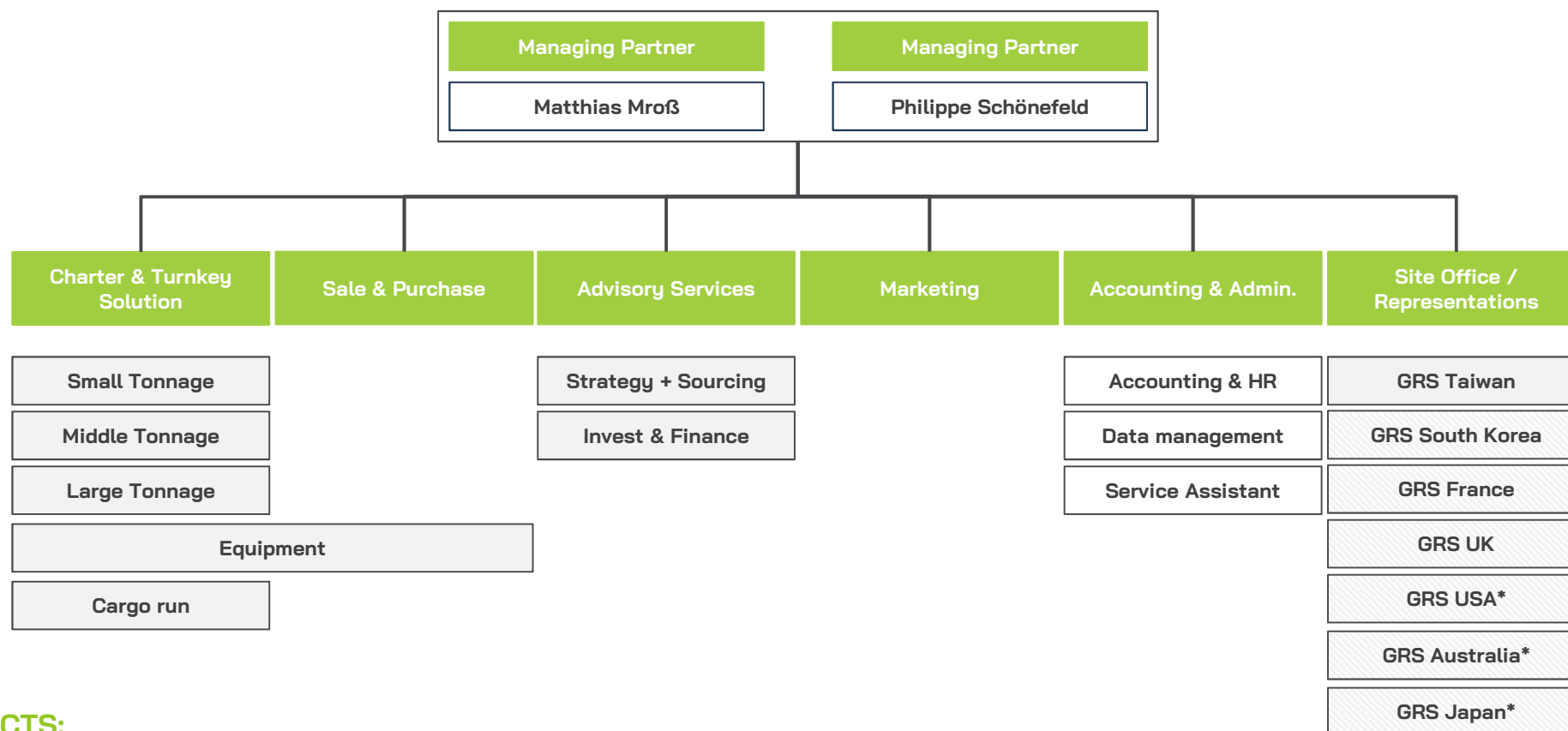
## GRS KEY MILESTONES

Corporate milestones over 10 years reflect the pioneering path of GRS from a national provider to a successful global company.



## GRS TEAMS OF EXPERTS

The diversified team of experts enable GRS to provide a broad range of offshore brokerage services. A combination of know-how and experience equals customized support.



### FACTS:

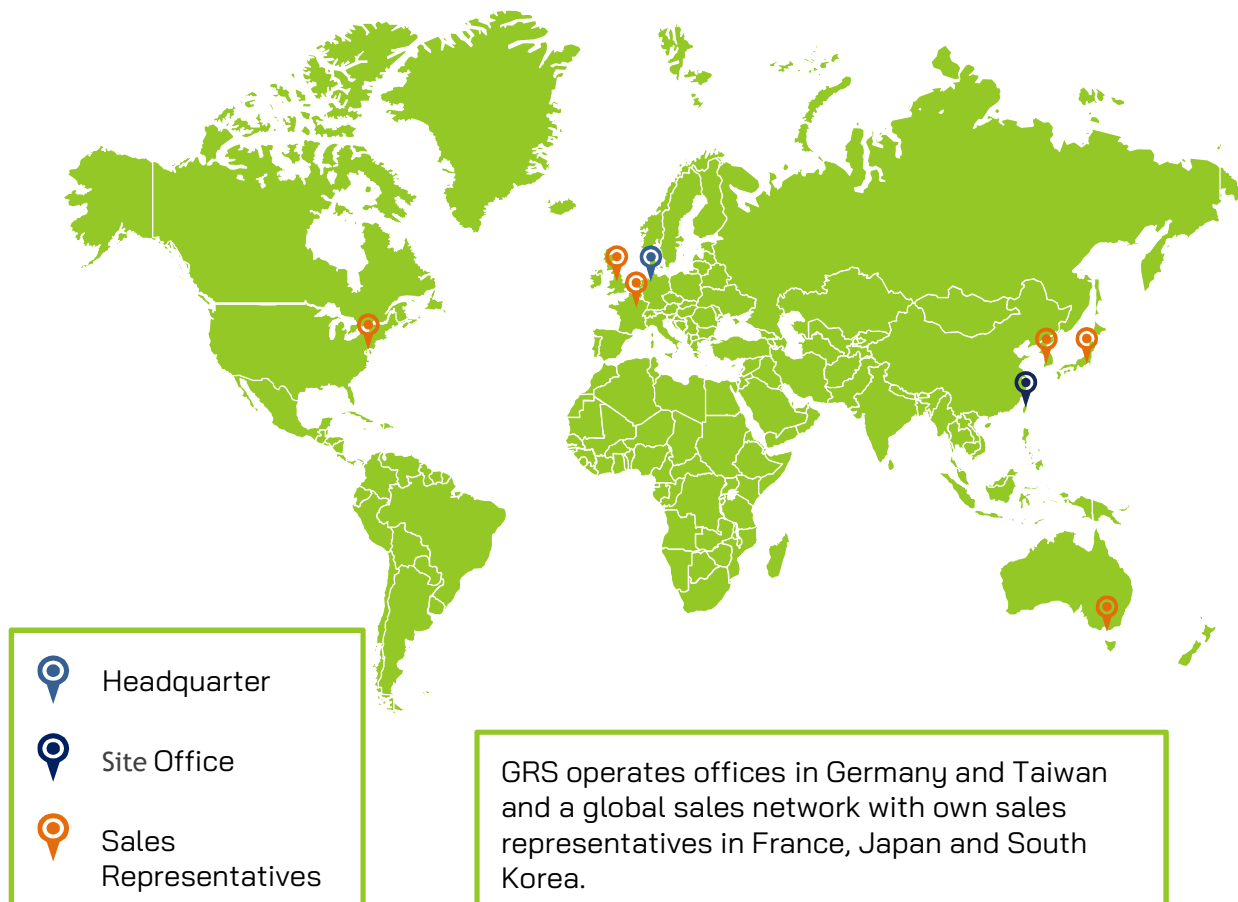
- ▶ GRS is operated by the two Managing Partners and their team of 18 employees and 5 freelancers.
- ▶ While the majority of the work force operates from the headquarter in Hamburg, Germany, 7 site representatives act on behalf of GRS in 7 other countries.
- ▶ The achievements of our organization are the result of the combined efforts of each individual, and our team is more than the sum of its parts. We each bring a complementary set of skills to continually move with the changing needs of our customers - each member of the GRS.GROUP team makes a vital contribution to the success of our company.



## FLYING THE GREEN FLAG WORLDWIDE.

GRS headquarters in Hamburg – additional strategic key locations in Europe and Asia for further growth.


### LOCATIONS AND OFFICES



### OUR FOOTPRINT

- ▶ GRS' headquarter is located in northern Germany in the port city Hamburg
- ▶ The third, newest headquarter of GRS opened in 2015 after the office location was moved within Hamburg for a second time in 2013 due to company growth.
- ▶ The first subsidiary 'GRS Global Renewables Shipbrokers GmbH Taiwan Branch' was established as an office in Taiwan in 12/2020.
- ▶ In the course of the expansion, further sale representations were established, in which local cooperation with sales representatives takes place:
  - Paris (France – 05/2016)
  - Mokpo (South Korea – 08/2019)
  - Tokyo (Japan – 11/2019)
  - Melbourne (Australia – 08/2022)
  - Hosham (UK – 07/2022)
  - New York (USA – 09/2022)
- ▶ All relevant regions worldwide are covered via own sales offices, local partnerships or via the Hamburg office. GRS already has a strong footprint in the most promising growth regions.



A photograph of the Stadthausbrücke in Hamburg, Germany, a large arched bridge spanning the Binnenalster river. The bridge is illuminated at dusk, and the city skyline is visible in the background.

## GRS HEADQUARTER HAMBURG

STADTHAUSBRÜCKE 7 | 20355 HAMBURG | GERMANY

+49 40 411 60 68 0  
INFO@GRS.GROUP

A photograph of the Monaco skyline, showing the dense cluster of skyscrapers and modern buildings along the coast, with the sea visible in the background.

## GRS FRANCE

### MONACO & PARIS

20, BOULEVARD PRINCESSE CHARLOTTE, 98000 MONACO -  
MONACO

+ 33 782 91 63 62  
+33 788 05 10 66  
FRANCE@GRS.GROUP

A photograph of a London Underground entrance, showing the iconic red and white striped canopy and the 'UNDERGROUND' sign above the entrance.

## GRS UNITED KINGDOM HORSHAM

+44 7867 69 61 69  
INFO@GRS.GROUP

A photograph of a busy street scene in Tokyo, showing a large crowd of people walking on a wide sidewalk, with modern buildings and shops in the background.

## GRS JAPAN TOKYO

7TH FLOOR, KIBUN DAIICHI BLDG. 7-5-3, TSUKIJI, CHUO-KU  
TOKYO 104-0045 | JAPAN

+81 3 3541 9191  
JAPAN@GRS.GROUP

A photograph of a blurred city scene in South Korea, showing bright lights and buildings, likely in Mokpo-Si or Seoul.

## GRS SOUTH KOREA MOKPO-SI & SEOUL

15, PYEONGHWA-RO 140BEON-GIL | MOKPO-SI JEOLLANAM-DO  
| REPUBLIC OF KOREA

+82 10 497 23331  
+82 61 287 4002  
KOREA@GRS.GROUP

A photograph of the Taipei skyline, featuring the prominent Taipei 101 skyscraper and other modern buildings, with the city lights visible at dusk.

## GRS TAIWAN TAIPEI CITY

14/F, NO.8, SECTION 5, XINYI ROAD | XINYI DISTRICT | TAIPEI  
CITY 110 | TAIWAN

+886 2 87 58 2205  
+886 2 87 58 2305  
TAIWAN@GRS.GROUP



## GRS USA

### NEW YORK

390 PLANDOME ROAD | SUITE 204 | 11030 MANHASSET | USA

+1 917 54 54 951  
V.GALLO@GRS.GROUP

## GRS AUSTRALIA

### MELBOURNE

LEVEL 14 | 1 COLLINS STREET | 3000 MELBOURNE | AUSTRALIA

+61 410 668 506  
ALISTAIR.MCKAY@IFCHOR.COM