

VESSEL PORTFOLIO

ANY VESSEL
ANYTIME



CRANE VESSEL



INSTALLATION VESSEL



WALK 2 WORK VESSEL (SOV)



GUARD VESSEL



PLATFORM SUPPLY VESSEL



CONSTRUCTION VESSEL



ANCHOR HANDLING TUG



CABLE LAYING VESSEL



CREW TRANSFER VESSEL



TUGBOAT



SURVEY VESSEL



MULTIPURPOSE TUG

OFFSHORE EQUIPMENT

FOR SALE AND FOR PURCHASE



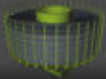
BARGE / PONTOON



ACCOMMODATION MODULE



TRANSFER SYSTEM / GANGWAY



CABLE CAROUSEL / TURNTABLE



CRANE



HELICOPTER DECK



OFFSHORE CONTAINER



CABLE INSTALLATION EQUIPMENT



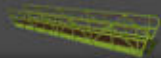
REMOTE OPERATING VEHICLE (ROV)



MOORING SYSTEM / WINCH



A-FRAME



MISCELLANEOUS EQUIPMENT



YOU THINK OFFSHORE WE FOLLOW YOUR THOUGHTS!

STRATEGY. SOURCING. MARINE ASSETS.

GRS IS THE WORLDWIDE LEADING CONSULTANCY AND SHIPBROKING BUSINESS IN OFFSHORE RENEWABLE ENERGY. AS AN INDEPENDENT ADVISOR, GRS SUPPORTS THE NEGOTIATION OF ALL CONTRACTS ACROSS ALL VALUE CREATION STAGES OF THE ENTIRE PROJECT DEVELOPMENT. AT THE SUBSEQUENT INSTALLATION AND OPERATION STAGE, GRS AS AN INTERNATIONALLY OPERATING AND INDEPENDENT SPECIALIST SHIPBROKER TAKES ON THE CHARTERING AND SALE AND PURCHASE OF ALL VESSELS AND EQUIPMENT REQUIRED AS WELL AS THE CONTRACTING OF ALL FURTHER OFFSHORE SERVICE PROVIDERS.

OUR SERVICES – YOUR ADVANTAGE!

- **STRATEGY+SOURCING**
- **INVEST+FINANCE**
- **CHARTERING**
- **SALE+PURCHASE**
- **CARGO RUN**
- **RESEARCH+CONSULTING**

WE HAVE THE VESSEL YOU HAVE THE CHOICE

STRATEGY+SOURCING FROM CONCEPT TO CONTRACT AND BEYOND

STRATEGY+SOURCING IS A TURNKEY CONSULTANCY SERVICE PROVIDING PROJECT MANAGEMENT FOR OFFSHORE PROJECTS IN RENEWABLE ENERGY. FROM CONCEPT DEVELOPMENT THROUGH TENDER SUPPORT AND CONTRACT NEGOTIATIONS AND CLOSING, OUR SERVICE ENSURES THE HIGHEST LEVEL OF COMPETITION TO MAXIMIZE COST AND TIME SAVINGS WHILE DELIVERING OUTSTANDING QUALITY.



INVEST+FINANCE VALUE-ADDING. TRUSTWORTHY. TARGETED.

WITH GRS.INVEST+FINANCE, INVESTORS AND FINANCIERS BENEFIT FROM OUR INDEPENDENT SHIPPING & CORPORATE FINANCE EXPERTISE IN THE OFFSHORE RENEWABLES MARKET. WE USE OUR GLOBAL NETWORK AND OUR IN-DEPTH INDUSTRY KNOWLEDGE TO PROVIDE FACT-BASED ANALYSIS TO FACILITATE STRATEGIC DECISION-MAKING.



WE HAVE THE VESSEL YOU HAVE THE CHOICE

CHARTER RELIABLE. INDEPENDENT. FAST.

BENEFIT FROM OUR INTERNATIONAL NETWORK AND AN INTERNAL DATABASE CONTAINING MORE THAN 100,000 OFFSHORE VESSELS.

- SPECIALISTS IN OFFSHORE RENEWABLES CHARTERING
- DATABASE WITH MORE THAN 100,000 VESSELS
- FULL RANGE OF SERVICES – FROM INITIAL ENQUIRY TO OFF-HIRE SURVEY COMPLETION
- STRONG INTERNATIONAL NETWORK
- MORE THAN 10 YEARS EXPERIENCE IN OFFSHORE VESSEL BROKERAGE



PURCHASE INDEPENDENT. TRUSTWORTHY. DISCREET.

OUR EXPERIENCED SPECIALISTS ANALYZE THE INTERNATIONAL MARKETS DAILY TO GAIN UP-TO-DATE INFORMATION ON COMPLETED SHIPPING TRANSACTIONS AND ASSESS THE PERFECT TIMING.

- TRUSTWORTHY PARTNERS FROM INITIAL PERSONAL CONSULTATION TO THE CONCLUSION OF A CONTRACT
- CONSULTING ON VESSEL AVAILABILITY AND MARKET PRICES
- DISCREET INTERMEDIARIES BETWEEN SUPPLY AND DEMAND PARTIES
- PROCESSING THE NECESSARY CONTRACT DOCUMENTATION
- SUGGESTIONS FOR ALTERNATIVE FINANCING OPTIONS





WE HAVE THE VESSEL **YOU HAVE THE CHOICE**

CARGO RUN **YOUR TRANSPORT - OUR JOB**

WE ARE HERE TO HELP WHATEVER YOUR REQUIREMENTS. PERHAPS YOU NEED TO TRANSPORT GOODS QUICKLY, OR YOU ARE LOOKING FOR LOW-COST OPTIONS. WHETHER YOU HAVE A LARGE VOLUME OF GOODS OR YOU JUST HAVE A SMALL LOAD TO TRANSPORT, WE WILL FIND THE RIGHT CONCEPT AND THE PERFECT CARGO RUN FOR YOUR NEEDS. OUR GREATEST ASSET IS THE HIGH DEGREE OF FLEXIBILITY WE CAN OFFER YOU. WE DRAW ON OUR RELIABLE NETWORK AND OUR COMPREHENSIVE DATABASE CONTAINING HUNDREDS OF SHIPPING COMPANIES WHOSE VESSELS ARE AT OUR DISPOSAL.



RESEARCH & CONSULTING **CURRENT MARKET DEVELOPMENTS** **AT A GLANCE**

OUR GRS RESEARCH TEAM PREPARES DATA ON CURRENT MARKET DEVELOPMENT FOR OFFSHORE RENEWABLE ENERGY. OUR POWERFUL ANALYTICAL TOOLS ENABLE US TO IDENTIFY VESSEL AVAILABILITY IN THE OFFSHORE RENEWABLE ENERGY SECTOR AND TACKLE POTENTIAL LOCAL BOTTLENECKS. WE PAVE THE WAY FOR NEW BUSINESS RELATIONSHIPS AND OPPORTUNITIES BY PROACTIVELY REACHING OUT TO LOCAL COMPANIES AND IDENTIFYING MARKET POTENTIAL.



INDEX

VESSELS	PAGE
CRANE VESSEL	6
INSTALLATION VESSEL	7
WALK-2-WORK VESSEL (SOV)	8
GUARD VESSEL	9
PLATFORM SUPPLY VESSEL (PSV)	10
CONSTRUCTION VESSEL	11
ANCHOR HANDLING TUG (AHT)	12
CABLE LAYING VESSEL	13
SEMISUBMERSIBLE VESSEL	14
SURVEY VESSEL	15
FIELD SUPPORT VESSEL (SOV)	16
DIVE SUPPORT VESSEL (DSV)	17
TUGBOAT	18
MULTICAT	19
MULTIPURPOSE TUG	20
CREW TRANSFER VESSEL (CTV)	21
ACCOMMODATION VESSEL	22
ACCOMMODATION PLATFORM	23
MINI-CTV	24
BARGE/PONTOON	25
EQUIPMENT PORTFOLIO	26
RIGID INFLATABLE BOAT (RIB)	27
REMOTELY OPERATED VEHICLE (ROV)	
HELICOPTER	
ACCOMMODATION MODULES	28
HELICOPTER DECK	
MISCELLANEOUS EQUIPMENT	
TRANSFER SYSTEM/GANGWAY	29
A-FRAME	
INSTALLATION EQUIPMENT	
CABLE CAROUSEL/TURNTABLE	30
CRANE	
MOORING SYSTEM/WINCH	



CRANE VESSEL

VESSEL FOR LIFTING OR TRANSPORTING HEAVY OFFSHORE STRUCTURES

HEAVY LIFT CRANE VESSELS ARE MAINLY USED AS WORK SHIPS TO TRANSPORT AND INSTALL OFFSHORE STRUCTURES AND COME IN VARIOUS DIMENSIONS AND CRANE CAPACITIES THAT FAR EXCEED 15,000 T, DEPENDING ON EACH OFFSHORE PROJECT'S REQUIREMENTS. THE VESSELS ARE OFTEN DESIGNED AS MULTIHULLS TO ENSURE A STABLE POSITION IN THE WATER. USUALLY, THEIR DECK HAS AMPLE SPACE AND IS VERY STRONG IN ORDER TO CARRY HEAVY, BULKY PARTS AND COMPONENTS.

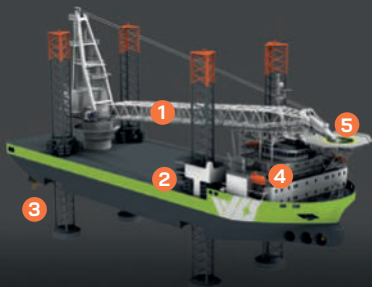
HOTSPOTS

- 1** HELICOPTER DECK
- 2** DYNAMIC POSITIONING - DP
- 3** CRANE
- 4** ACCOMMODATION
- 5** DECK

REQUEST YOUR
CRANE VESSEL AT

GRS.GROUP/GRS-OFFSHORE-RENEWABLES





INSTALLATION VESSEL

JACK UP CRANE VESSEL FOR INSTALLING WIND TURBINES

INSTALLATION VESSELS ARE SPECIALISED FOR INSTALLING FOUNDATIONS AND OFFSHORE WIND TURBINES. MAIN FEATURES ARE A HEAVY LIFT CRANE WITH A LOAD HANDLING CAPACITY OF 300 TO 3000 TONNES AND A JACKING SYSTEM THAT ENABLES THE CRANE VESSEL TO CARRY OUT TASKS REGARDLESS OF SWELLS. INSTALLATION VESSELS THESE DAYS ARE AROUND 180 M LONG AND 65 M WIDE. USING ITS JACKING SYSTEM WITH LEGS, THIS TYPE OF VESSEL CAN WORK IN WATER DEPTHS OF 65 M AND MORE.

HOTSPOTS

- 1** HEAVY LIFT CRANE
- 2** JACKING SYSTEM
- 3** DP 2
- 4** ACCOMMODATION
- 5** HELICOPTER DECK

REQUEST YOUR
CRANE VESSEL AT

[GRS.GROUP/GRS-OFFSHORE-RENEWABLES](https://www.grs.group/grs-offshore-renewables)





WALK-2-WORK VESSEL (SOV) SERVICE OPERATION AND ACCOMMODATION VESSEL FOR TRANSFER OF SERVICE TECHNICIANS OFFSHORE

WALK-2-WORK VESSELS ARE INTENDED TO PROVIDE SAFE TRANSFER OF PERSONNEL AND SMALLER CARGO TO DIFFERENT OFFSHORE PLATFORMS SUCH AS WIND TURBINES ESPECIALLY DURING HARSH WEATHER CONDITIONS. THE MOST REMARKABLE ATTRIBUTE OF WALK-2-WORK VESSELS IS THE MOTION COMPENSATED GANGWAY TO ENSURE A SAFE TRANSFER. WALK-2-WORK VESSELS USUALLY FEATURE A COMPARABLY HIGH NUMBER OF CABINS FOR CHARTERERS PERSONNEL, A WORK DECK FOR STORAGE OF EQUIPMENT AND A HEAVE COMPENSATED CRANE. OFTEN A HELI DECK OR A BOATLANDING FOR CREW TRANSFER VESSELS ARE INSTALLED AS WELL.

HOTSPOTS

- 1** DP 2
- 2** GANGWAY SYSTEM
- 3** CARGO DECK
- 4** ACCOMMODATION
- 5** CRANE
- 6** BOW SHAPE

REQUEST YOUR
CRANE VESSEL AT

[GRS.GROUP/GRS-OFFSHORE-RENEWABLES](https://www.grs.group/grs-offshore-renewables)





GUARD VESSEL

VESSEL FOR SECURING OFFSHORE CONSTRUCTION SITES

GUARD VESSELS SECURE THE SITE DURING THE CONSTRUCTION STAGE OF AN OFFSHORE WIND FARM, A SUBSTATION PLATFORM OR A CABLE ROUTE. THE VESSEL CONSTANTLY MONITORS MARINE TRAFFIC NEAR THE CONSTRUCTION SITE VISUALLY AND WITH RADAR AND AIS AND GUIDES EXTERNAL VESSELS HOW TO SAFELY GET PAST THE SITE. GUARD VESSELS' ESSENTIAL FEATURES INCLUDE BEING ABLE TO STAY OFFSHORE UP TO 30 DAYS AND LONGER AND GREAT SEAWORTHINESS COMBINED WITH HIGH SERVICE SPEEDS.

HOTSPOTS

- 1** PROPULSION CONCEPT
- 2** FAST RESCUE BOAT
- 3** BRIDGE EQUIPMENT
- 4** CAPABILITY OF STAYING OFFSHORE

REQUEST YOUR
CRANE VESSEL AT

[GRS.GROUP/GRS-OFFSHORE-RENEWABLES](https://www.grs.group/grs-offshore-renewables)





PLATFORM SUPPLY VESSEL

A PLATFORM SUPPLY VESSEL (PSV) TRANSPORTS CONSTRUCTION MATERIALS AND EQUIPMENT

PSVS TYPICALLY TRANSPORT CONSTRUCTION MATERIALS AND EQUIPMENT. IN THE OFFSHORE WIND MARKET PSVS ARE FREQUENTLY USED TO TRANSPORT INDIVIDUAL WIND TURBINES AND FOUNDATION PARTS AND ARE INVOLVED IN SUPPLY AND WASTE DISPOSAL FOR OFFSHORE TRANSFORMER STATIONS. THE VESSELS HAVE VARIOUS TANKS AND POWERFUL PUMPS FOR ALL LIQUID GOODS AS WELL AS A LARGE OPEN CARGO DECK WHICH CAN BE USED TO STOW UNWIELDY CARGOES AND CONTAINERS.

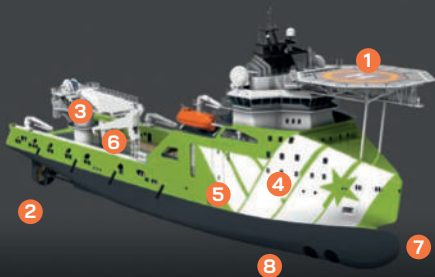
HOTSPOTS

- 1** CARGO DECK
- 2** TANK STORAGE CAPACITIES
- 3** DP 2
- 4** FIRE FIGHTING EQUIPMENT
- 5** ACCOMMODATION

REQUEST YOUR
CRANE VESSEL AT

[GRS.GROUP/GRS-OFFSHORE-RENEWABLES](https://www.grs.group/grs-offshore-renewables)





CONSTRUCTION VESSEL

VESSEL FOR LIFTING OR TRANSPORTING HEAVY OFFSHORE STRUCTURES

CONSTRUCTION VESSELS ARE USED FOR SUBSEA CONSTRUCTION PROJECTS SUCH AS LAYING CABLES AND INSTALLING FOUNDATIONS OR TIDAL POWER PLANTS. THESE VESSELS ARE USUALLY EQUIPPED WITH A DP SYSTEM AND A HELICOPTER DECK FOR OFFSHORE CREW CHANGES. THE AHC-CRANE ONBOARD CAN BE USED TO LOAD HEAVY COMPONENTS IN DEEP WATER AND SWELLS OR MAINTAIN WIND TURBINES AND FOUNDATIONS. ALSO DIVING AND ROV TASKS CAN BE CARRIED OUT WITH THESE VESSELS.

HOTSPOTS

- 1** HELICOPTER DECK
- 2** DP 2
- 3** AHC CRANE
- 4** ACCOMMODATION
- 5** ROV HANGAR
- 6** DECK
- 7** BOW SHAPE
- 8** ENGINE

REQUEST YOUR
CRANE VESSEL AT

[GRS.GROUP/GRS-OFFSHORE-RENEWABLES](https://www.grs.group/grs-offshore-renewables)





ANCHOR HANDLING TUG

ANCHOR HANDLING TUGS (AHTS) FOR ASSISTING AND TOWING DRILLING PLATFORMS

THESE ALL-PURPOSE VESSELS ARE MAINLY USED FOR TOWAGE, ANCHORING AND INSTALLATION OPERATIONS AS WELL AS SUPPLY SERVICES AND ALSO AS DIVE SUPPORT VESSELS. AHTS ARE OFTEN EQUIPPED WITH A DYNAMIC POSITIONING SYSTEM THAT ENABLES THEM TO MAINTAIN PRECISE POSITIONS IN OFFSHORE LOCATIONS OVER LONG PERIODS AND UNDER A WIDE RANGE OF WEATHER CONDITIONS. POWERFUL WINCHES SERVE TO TOW DRILLING PLATFORMS AND RECOVER LARGE DRILLING PLATFORM ANCHORS OFFSHORE.

HOTSPOTS

- 1** DYNAMIC POSITIONING 2 - DP 2
- 2** ACCOMMODATION
- 3** OFFSHORE CRANE
- 4** DECK
- 5** TOWING GEAR

REQUEST YOUR
CRANE VESSEL AT

[GRS.GROUP/GRS-OFFSHORE-RENEWABLES](https://www.grs.group/grs-offshore-renewables)





CABLE LAYING VESSEL

SPECIALIST VESSEL FOR LAYING SUB-SEA CABLES

CABLE LAYING VESSELS ARE USED FOR LAYING SUB-SEA CABLES AND ARE ALSO ABLE TO RETRIEVE BROKEN OR DAMAGED SUB-SEA CABLES AND REPAIR THEM ON BOARD. SUB-SEA CABLES ARE BURIED IN THE SEA FLOOR BY THE CABLE LAYER USING A SPECIAL PLOUGH. A DP SYSTEM ENABLES THE VESSEL TO REMAIN IN A PRECISE POSITION ABOVE THE DEFINED CABLE ROUTE. TODAY, THE LARGEST CABLE LAYERS CAN STOW AND MORE THAN 10,000 TONNES OF CABLES ON BOARD, USUALLY STOWED SPIRALLY IN A CABLE CAROUSEL (HORIZONTAL ROTATING TABLE).

● HOTSPOTS

- 1 CABLE CAROUSEL
- 2 DECK
- 3 A-FRAME / CRANE
- 4 DECK CRANE
- 5 ACCOMMODATION
- 6 DYNAMIC POSITIONING SYSTEM 2 - DP 2

REQUEST YOUR
CRANE VESSEL AT

[GRS.GROUP/GRS-OFFSHORE-RENEWABLES](https://www.grs.group/grs-offshore-renewables)





SEMISUBMERSIBLE VESSEL TRANSPORT VESSEL FOR EXTRA LARGE PROJECT CARGO AND OFFSHORE CONSTRUCTION PARTS

A SEMISUBMERSIBLE VESSEL IS MAJORLY USED FOR CARRYING PRODUCTION PLATFORMS, OTHER FLOATING VESSELS OR HEAVY DUTY CARGO. IT IS SUPPORTED BY WAY OF PONTOONS WHICH ARE LOCATED UNDER THE WATER SURFACE. BY PUSHING OUT THE WATER FROM THE BALLAST TANKS, THE VESSEL HEIGHT CAN BE ADJUSTED. AFTER THE CARGO IS FULLY LOADED INTO THE LOADING AREA, THE DECK WILL BE RAISED AGAIN OUT OF THE WATER AND THE SEMISUBMERSIBLE VESSEL ALONG WITH ITS CARGO MAKES ITS JOURNEY TO THE SPECIFIED DESTINATION.

HOTSPOTS

- 1** DECK
- 2** BALLAST TANK
- 3** SUBMERGED
- 4** ANCHOR SYSTEM

REQUEST YOUR
CRANE VESSEL AT

[GRS.GROUP/GRS-OFFSHORE-RENEWABLES](https://www.grs.group/grs-offshore-renewables)





SURVEY VESSEL

VESSEL FOR CONDUCTING GEOLOGICAL, BIOLOGICAL AND VISUAL INVESTIGATIONS OF CONSTRUCTION SITES AND STRUCTURES.

SURVEY VESSELS ARE DEPLOYED PRIOR AND DURING THE CONSTRUCTION OF OFFSHORE WIND FARMS FOR A WIDE VARIETY OF HYDROGRAPHIC AND GEOPHYSICAL SOIL INVESTIGATIONS. THESE VESSELS ARE EQUIPPED WITH E.G. FIRMLY INSTALLED MEASURING AND SONAR SYSTEMS, MULTIBEAM, SPECIAL MOUNTS FOR MEASURING DEVICES, LABORATORY WORKSTATIONS, OUTDOOR WORKPLACES, FISHING GEAR, CRANES, FAST WINCHES AND IN SOME CASES A DP SYSTEM THAT GUARANTEES SAFE WORKING CLOSE TO OFFSHORE STRUCTURES.

HOTSPOTS

- 1** DECK AREA WITH EXTERNAL WORKPLACES
- 2** ACCOMMODATION
- 3** LABORATORY WORKSTATIONS
- 4** CRANE
- 5** POLE

REQUEST YOUR
CRANE VESSEL AT

[GRS.GROUP/GRS-OFFSHORE-RENEWABLES](https://www.grs.group/grs-offshore-renewables)





FIELD SUPPORT VESSEL (SOV)

SERVICE OPERATION VESSEL FOR MAINTENANCE AND OPERATION OF OFFSHORE STRUCTURES

THESE VESSELS OFFER MULTIPLE FLEXIBLE SERVICES IN THE AREA OF UNDERWATER SUPPORT, ROV OPERATIONS, ACCOMMODATION FACILITIES, STAND BY SERVICES, FAST RESCUE CRAFT SERVICES AND THE USUAL SUPPLY FUNCTIONS. A FIELD SUPPORT VESSEL IS EQUIPPED WITH A VERY STABLE PLATFORM AND WITH EXCELLENT DYNAMIC POSITIONING CAPABILITIES. A VAST RANGE OF BUILT-IN FUNCTIONS ALLOWS CHARTERERS TO MEET CHANGING REQUIREMENTS WITHOUT EXPENSIVE MODIFICATIONS.

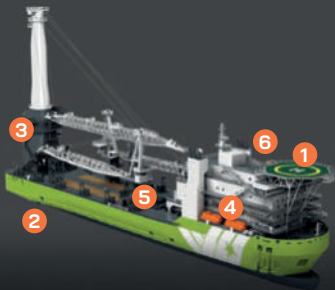
HOTSPOTS

- 1** FAST RESCUE CRAFTS (FRCS)
- 2** ACCOMMODATION
- 3** DYNAMIC POSITIONING 2 - DP 2
- 4** FIRE-FIGHTING EQUIPMENT (FIFI)
- 5** WINCH DECK

REQUEST YOUR
CRANE VESSEL AT

[GRS.GROUP/GRS-OFFSHORE-RENEWABLES](https://www.grs.group/grs-offshore-renewables)





DIVE SUPPORT VESSEL

DIVE SUPPORT VESSEL (DSV) FOR INSTALLING AND SERVICING OFFSHORE STRUCTURES

DSVS ARE MAINLY USED AS INSTALLATION AND MAINTENANCE SHIPS FOR OFFSHORE STRUCTURES AND COMBINE CONSTRUCTION AND DIVING TASKS. EQUIPPED WITH DIVE SYSTEMS, THESE VESSELS CAN BE DEPLOYED IN BOTH COASTAL WATERS AND DEEP SEA AREAS AND ARE ABLE TO REMAIN IN THE EXACT POSITION DUE TO MULTIPLE POINT ANCHORING OR A DP SYSTEM. ON MANY DSVS DIVING BELL, DIVING LIFTS, ROVS AND HYPERBARIC CHAMBERS AND CRANES ARE PERMANENT FIXTURES.

HOTSPOTS

- 1** HELICOPTER DECK
- 2** DP 2
- 3** AHC CRANE
- 4** ACCOMMODATION
- 5** HYPERBARIC CHAMBERS
- 6** ROV HANGAR

REQUEST YOUR
CRANE VESSEL AT

[GRS.GROUP/GRS-OFFSHORE-RENEWABLES](https://www.grs.group/grs-offshore-renewables)





TUGBOAT

BOATS USED FOR TOWAGE, TRANSPORT AND ASSISTANCE

TUGS HAVE A POWERFUL PROPULSION SYSTEM AND ARE USED IN THE OFFSHORE MARKET FOR TOWING AND POSITIONING PONTOONS AND INSTALLATION VESSELS. FURTHERMORE, TUGS ARE DEPLOYED FOR SALVAGING AND DREDGING WORKS. THE POWER OF A TUGBOAT VARIES ACCORDING TO TYPE. AN ESSENTIAL MEASURE IS KNOWN AS BOLLARD PULL, WHICH IS MEASURED IN TONNES. THE RANGE SPANS FROM 30 TONNES TO LARGE OFFSHORE UNITS WITH BOLLARD PULL CAPACITIES OF UP TO 250 TONNES AND MORE.

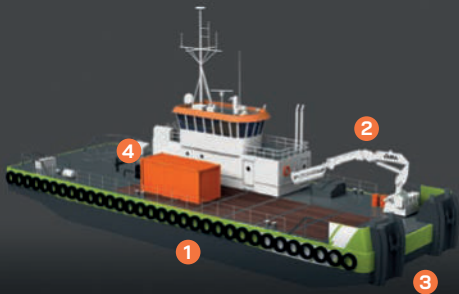
HOTSPOTS

- 1** BOLLARD PULL
- 2** WINCHES
- 3** PROPULSION
- 4** FIRE FIGHTING EQUIPMENT

REQUEST YOUR
CRANE VESSEL AT

[GRS.GROUP/GRS-OFFSHORE-RENEWABLES](https://www.grs.group/grs-offshore-renewables)





MULTICAT

MULTI-PURPOSE WORKBOAT FOR OFFSHORE WORKS, TRANSPORT AND DREDGING.

MULTICATS ARE ALL-PURPOSE VESSELS AND USED FOR A VARIETY OF TASKS IN THE OFFSHORE SECTOR. KEY TASKS ARE TOWING OFFSHORE CONSTRUCTION VESSELS AND HANDLING ANCHORS AND NAVIGABLE WATER BUOYS. THE VESSELS ARE EQUIPPED WITH POWERFUL WINCHES, ONE TO TWO OFFSHORE CRANES AS WELL AS A SPACIOUS FLAT DECK. MORE AND MORE MULTICATS ARE BEING EQUIPPED WITH DP IN ORDER TO EXTEND THEIR FLEXIBLE RANGE OF OPERATIONS. DUE TO THEIR LOW DRAUGHT MULTICATS ARE ABLE TO OPERATE IN SHALLOW-WATER.

HOTSPOTS

- 1** BOTTOM OF A SHIP / LOW DRAUGHT
- 2** CRANES
- 3** DP
- 4** WINCHES

REQUEST YOUR
CRANE VESSEL AT

[GRS.GROUP/GRS-OFFSHORE-RENEWABLES](https://www.grs.group/grs-offshore-renewables)





MULTIPURPOSE TUG

MULTI-PURPOSE WORKBOAT FOR OFFSHORE WORK, TRANSPORT AND DREDGING

MULTIPURPOSE TUG ARE USED FOR A VARIETY OF TASKS IN THE OFFSHORE SECTOR. THE VESSELS ARE EQUIPPED WITH POWERFUL WINCHES, AN OFFSHORE CRANE AND A WOOD-PLANKED DECK. A POWERFUL PROPULSION SYSTEM ENABLES THE VESSEL TO SAFELY MANOEUVRE EVEN IN STRONG OCEAN CURRENTS. KEY TASKS ARE TOWING OFFSHORE CONSTRUCTION VESSELS, HANDLING ANCHORS AND NAVIGABLE WATER BUOYS. MULTIPURPOSE TUG CAN OPERATE IN SHALLOW-WATER DUE TO THEIR LOW DRAUGHT.

HOTSPOTS

- 1** DECK
- 2** CRANE
- 3** BOLLARD PULL
- 4** WINCHES
- 5** BOW FENDERS

REQUEST YOUR
CRANE VESSEL AT

[GRS.GROUP/GRS-OFFSHORE-RENEWABLES](https://www.grs.group/grs-offshore-renewables)





CREW TRANSFER VESSEL

VESSEL FOR THE TRANSFER OF PERSONNEL AND SPARE PARTS TO OFFSHORE WIND TURBINES.

CTVS ARE MAINLY USED TO TRANSPORT OFFSHORE PERSONNEL AND SMALLER CARGO UNITS. A SMALL TO MEDIUM-SIZED DECK CRANE AND A FUELLING SYSTEM FOR WIND TURBINE AGGREGATES ADD TO THE VERSATILITY OF THIS VESSEL TYPE. THE FENDER SYSTEM AT THE BOW HELPS THE VESSELS TO APPROACH THE ACCESS LADDER OF A WIND TURBINE OR AN ACCOMMODATION VESSEL AND FACILITATES SAFE BOARDING. DEPENDING ON THE DESIGN, CTVS ACHIEVE A SPEED OF BETWEEN 20 AND 30 KNOTS AND CAN TRANSPORT 12 TO 24 PASSENGERS.

● HOTSPOTS

- 1 FENDER
- 2 LOADING DECK
- 3 PASSENGERS
- 4 CRANE
- 5 TRANSFER SYSTEM
- 6 BRIDGE

REQUEST YOUR
CRANE VESSEL AT

GRS.GROUP/GRS-OFFSHORE-RENEWABLES





ACCOMMODATION VESSEL

ACCOMMODATION VESSEL FOR HOUSING OFFSHORE WORKERS AT SEA

OFFSHORE ACCOMMODATION VESSELS ARE USED AS HOTEL SHIPS IN DIRECT PROXIMITY TO THE CONSTRUCTION SITE. SEPARATE LANDING PLATFORMS ALLOW OFFSHORE WORKERS TO BOARD THE CTVS AND A HELICOPTER DECK IS AVAILABLE FOR CREW CHANGE. THE VESSELS FREQUENTLY SERVE AS A CONSTRUCTION OFFICE AT SEA WITH VARIOUS COMMUNICATION AND CONFERENCE ROOMS. MANY VESSELS ALSO PROVIDE SUFFICIENT STORAGE FOR OFFSHORE SPARE PARTS AND WORKSHOPS FOR VARIOUS TYPES OF REPAIR WORKS.

HOTSPOTS

- 1** HELICOPTER DECK
- 2** BOAT LANDINGS
- 3** ACCOMMODATION
- 4** OFFICES AND CONFERENCE ROOMS
- 5** STORAGE AREA

REQUEST YOUR
CRANE VESSEL AT

[GRS.GROUP/GRS-OFFSHORE-RENEWABLES](https://www.grs.group/grs-offshore-renewables)





ACCOMMODATION PLATFORM

OFFSHORE ACCOMMODATION PLATFORM FOR PERSONNEL AND EQUIPMENT

ACCOMMODATION PLATFORMS ARE USED DURING INSTALLATION AND COMMISSIONING OF OFFSHORE SUBSTATION PLATFORMS. THESE TYPE OF ACCCOMMODATION CAN HELP TO PROVIDE GOOD WORKING AND LIVING CONDITIONS FOR OFFSHORE PERSONNEL FOR MONTHS. ALONG WITH THIS, THE PLATFORM IS EQUIPPED WITH CATERING AREAS, SANITARY FACILITIES, WORKSHOPS, STORAGE AREAS, OFFICES AND SPACE FOR LEISURE ACTIVITIES. ALMOST ALL OFFSHORE ACCOMMODATION PLATFORMS ARE EQUIPPED WITH HELICOPTER LANDING DECKS.

HOTSPOTS

- 1** ACCOMMODATIONS
- 2** HELICOPTER DECK
- 3** CRANES
- 4** JACKING SYSTEM

REQUEST YOUR
CRANE VESSEL AT

[GRS.GROUP/GRS-OFFSHORE-RENEWABLES](https://www.grs.group/grs-offshore-renewables)





MINI-CTV

SMALL CREW TRANSFER VESSELS (CTVS)

MINI-CTVS ARE USED FOR THE RAPID TRANSPORT OF OFFSHORE PERSONNEL AND SMALLER SPARE PARTS OR TOOLS. THESE BOATS CAN TRANSPORT UP TO 12 PASSENGERS AND ACHIEVE A SPEED OF BETWEEN 30 AND 40 KNOTS. THE FENDER SYSTEM AT THE BOW ENABLES THE PASSENGERS TO EMBARK SAFELY. THE VESSELS CAN BE LOADED ON BOARD A FIELD SUPPORT VESSEL OFFSHORE AND LAUNCHED INTO THE WATER BY CRANE OR LAUNCH SYSTEM. THE SUPERSTRUCTURES PROVIDE GOOD PROTECTION FOR PASSENGERS IN A WIDE RANGE OF WEATHER CONDITIONS.

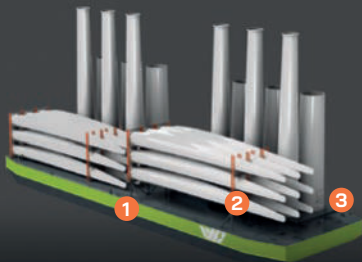
HOTSPOTS

- 1 FENDER
- 2 PROPULSION SYSTEM
- 3 PASSENGERS
- 4 SUITABLE FOR A VARIETY OF APPLICATIONS

REQUEST YOUR
CRANE VESSEL AT

[GRS.GROUP/GRS-OFFSHORE-RENEWABLES](https://www.grs.group/grs-offshore-renewables)





BARGE PONTON FOR TRANSPORTING LARGE/HEAVY ELEMENTS

BARGES, FLAT TOP BARGES AND PONTOONS FOR HEAVY LOADS ARE USED FOR SHIPPING AND INTERIM STORAGE OF WIND TURBINES, ROTOR BLADES, MONOPILES, JACKET FOUNDATIONS AND ALL OTHER LARGE AND HEAVY ELEMENTS IN THE OFFSHORE SECTOR. IN ADDITION TO STANDARD FLAT TOP BARGES, THE MARKET OFFERS DIFFERENT SPECIAL BARGES FOR HEAVY LOAD, FLOATING LOADS AND BARGES FOR LAUNCHING STEEL CONSTRUCTIONS OR JACKET FOUNDATIONS.

HOTSPOTS

- 1** BALLASTABLE
- 2** LOCKS AND LASHINGS
- 3** REINFORCED DECK

REQUEST YOUR
CRANE VESSEL AT

[GRS.GROUP/GRS-OFFSHORE-RENEWABLES](https://www.grs.group/grs-offshore-renewables)



OFFSHORE EQUIPMENT

IDEAL OFFSHORE EQUIPMENT FOR YOUR PROJECT.

FIND THE RIGHT EQUIPMENT FOR YOUR OFFSHORE RENEWABLES PROJECT BY SEARCHING OUR EXTENSIVE DATABASE. IF YOU CAN'T FIND WHAT YOU NEED, CONTACT OUR EQUIPMENT MANAGERS. WE ALSO ASSIST OWNERS IN SELLING THEIR EQUIPMENT.



RIGID INFLATABLE BOAT (RIB)

REMOTELY OPERATED VEHICLE (ROV)

HELICOPTER

ACCOMMODATION MODULES

HELICOPTER DECK

MISCELLANEOUS EQUIPMENT

TRANSFER SYSTEM/GANGWAY

A-FRAME

INSTALLATION EQUIPMENT

CABLE CAROUSEL/TURNTABLE

CRANE

MOORING SYSTEM/WINCH



RIGID INFLATABLE BOAT

RIBS ARE MAINLY USED FOR THE RAPID AND FLEXIBLE TRANSPORT OF OFFSHORE PERSONNEL AND FOR RESCUING CASTAWAYS.



REMOTELY OPERATED VEHICLE

ROVS ARE USED FOR A VARIETY OF UNDERWATER TASKS AND INSPECTIONS ON OFFSHORE STRUCTURES IN WATER DEPTHS OF A FEW METERS UP TO THOUSANDS OF METERS.



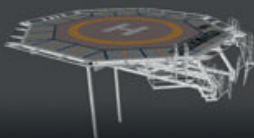
HELICOPTER

SPECIALLY EQUIPPED HELICOPTERS TRANSFER PERSONNEL AND EQUIPMENT TO OFFSHORE WIND FARMS.



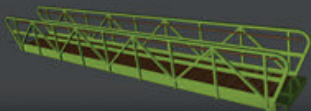
ACCOMMODATION MODULES

FOR CREATING MORE LIVING SPACE ON VESSELS: MOBILE, FLEXIBLE TO USE AND STACKABLE.



HELICOPTER DECK

FOR CREATING MORE TRANSFER FLEXIBILITY ON VESSELS, JACK UPS OR SUBSTATIONS: NEW OR SECOND HAND HELICOPTER DECKS FOR SALE OR RENT.



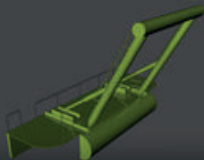
MISCELLANEOUS EQUIPMENT

FIXED OR TELESCOPIC GANGWAYS BETWEEN 10 AND 40 METERS LONG AND AVAILABLE IN DIFFERENT CONFIGURATIONS.



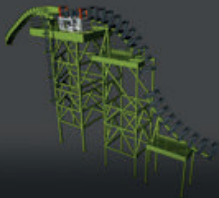
TRANSFER SYSTEM/GANGWAY

ON HIGH SEAS, THESE SYSTEMS WILL SAFELY TRANSFER BOTH STAFF AND CARGO FROM A SHIP TO A FIXED PLATFORM.



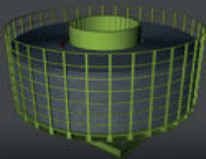
A-FRAME

NEW OR SECOND HAND A-FRAMES WITH LIFTING CAPACITIES UP TO 350 TONS AND A WORKING RADIUS TAILOR MADE TO SUIT ANY VESSEL DESIGN.



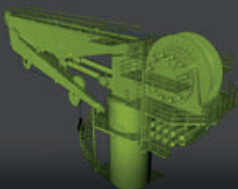
INSTALLATION EQUIPMENT

ALL KIND OF CABLE INSTALLATION EQUIPMENT:
FOR LOADING, UNLOADING OR LAYING OF SUBSEA CABLES.



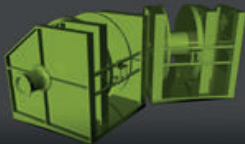
CABLE CAROUSEL/TURNTABLE

CABLE CAROUSEL FOR TRANSPORTATION OR STORAGE, AVAILABLE IN DIFFERENT SIZES FOR SALE AND RENT.



CRANE

NEW BUILD OR SECOND HAND OFFSHORE CRANES ARE AVAILABLE IN VARIOUS SIZES AND CAN BE MODIFIED FOR SPECIFIC CUSTOMER REQUIREMENTS.



MOORING SYSTEM/WINCH

MOORING SYSTEMS FOR MOORING LINES, ANCHORS AND CONNECTORS, USED FOR STATION KEEPING OF A SHIP OR FLOATING PLATFORM.

3D VESSEL PORTFOLIO

VISIT OUR WEBSITE
FOR THE 360° VIEW

EXPLORE
NOW >





IF YOU WOULD LIKE TO CHARTER OR BUY, HAVE QUESTIONS OR NEED INDIVIDUAL ADVICE, PLEASE CALL:



+49 40 411 60 68 0



INFO@GRS.GROUP



**FOR IMMEDIATE
PERSONAL SERVICE FROM ONE
OF OUR TEAM MEMBERS.**

WWW.GRS.GROUP/TEAM



**GET IN TOUCH WITH
ONE OF OUR OFFICES
WORDLWIDE.**

WWW.GRS.GROUP/CONTACT

